

## TECHNICAL DATA SHEET



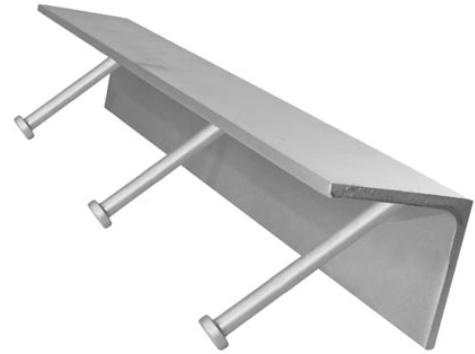
### ANGLE BAR

HOT-GALVANIZED ANGLE BAR FOR STRENGTHENING THE EDGES OF CONCRETE FLOORS

#### Product description

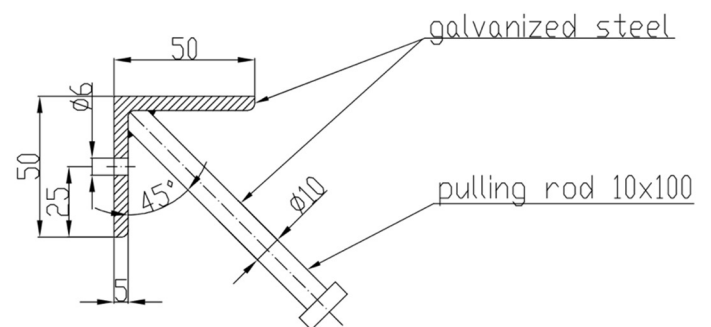
Angle Bars are designed to be used as protecting profile for the inner corner of the concrete constructions. They can transfer moderate loads to the concrete.

The standard length of the angle is 3 meters. They can be cut easily to required length at building site. Anchoring of the angle is based on rebar anchors.



#### Technical description

- Angle bar 50 x 50 x 5mm
- Diameter of anchoring rods 10mm.
- Length of anchor rods 100mm
- Standard length of angle bracket: 3000mm
- Steel grade: S355



#### Places of application

- Garage entrances in private houses, apartment buildings, offices, etc
- Loading ramps in logistics centers, commercial areas, production buildings, etc
- Door openings on industrial floors

#### Sales

Betotrade OÜ  
Tapri 13, Tallinn, 11415  
Tel: +372 656 6767  
E-post: info@betotrade.ee